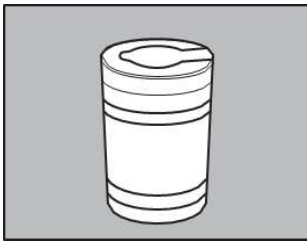
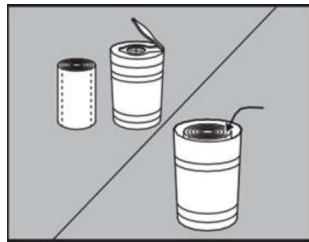


## Basic How To Guide - Canister



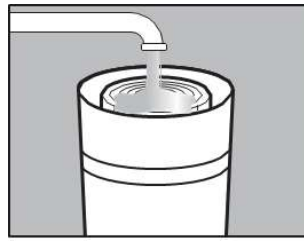
Step 1

Remove the contents from your case of 3M™ Instant Microbe Removing Wipes. If you have a new canister it will contain a roll inside the canister. Remove top of canister and proceed to step 3.



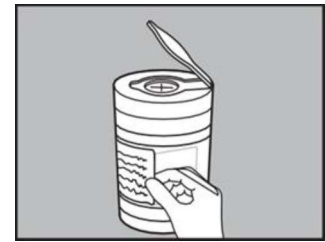
Step 2

When refilling, remove lid and place new roll of 3M™ Instant Microbe Removing Wipes into the canister. Ensure canister is thoroughly clean, dried and free of contaminants prior to loading in new roll. Place your roll of 3M™ Instant Microbe Removing Wipes into the canister.



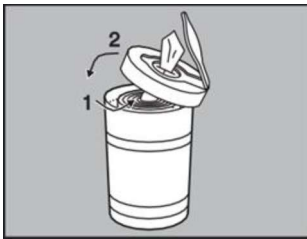
Step 3

Slowly pour a minimum of 1 liter of clean tap water or compatible liquid of clean tap water or compatible product over the middle of the roll in the canister. Make sure the liquid has fully saturated the wipes.



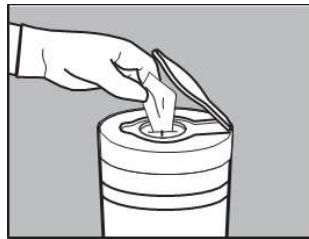
Step 4

Place appropriate label on side of the canister identifying water or chemical product information and date filled.



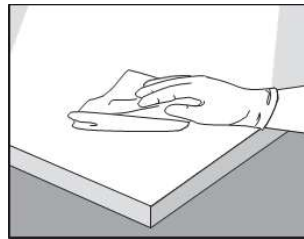
Step 5

Find the leading wipe from the center of the roll and gently feed it through the lid of the canister. Tightly place the lid back on the canister.



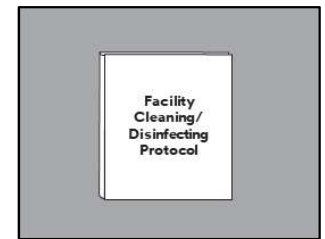
Step 6

Pull the wipe through the center hole and tear at perforation. Ensure lid is closed after removing wipe.



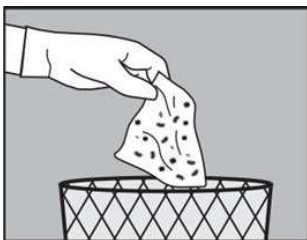
Step 7

Wipe surfaces with 3M™ Instant Microbe Removing Wipes.



Step 8

It is recommended to follow current facility protocol when using 3M™ Instant Microbe Removing Wipes. This wipe does not change the process, it provides physical removal of microbes.



Step 9

After cleaning is complete, it is recommended to dispose of the used wipes in the proper waste receptacle per your facility cleaning/disinfecting protocol.

## Limited Remedy

3M recommended product end uses are listed in each 3M product bulletin.

End uses not listed in the applicable 3M Product Bulletins are typically not eligible for 3M Warranties.

- For all product end uses (recommended or not recommended), user remains solely responsible for evaluating, testing and approving this 3M product and determining whether it is appropriate and suitable for customer's application.
- For non-recommended and/or non-warranted end uses or applications, users must assume any associated risks, and acknowledge that 3M has no liability for such end uses or applications.

Please contact your 3M representative with any questions about end uses and warranties.

## Limitations of liability

All questions of warranty and liability relating to this product are governed by the terms and conditions of the sale, subject, where applicable, to the prevailing law.

## Health and Safety

When handling any chemical products, read the manufacturer's container labels and the Safety Data Sheets (SDS) for important health, safety and environmental information.

Follow the link to obtain SDS sheets for 3M products on [3M.com/SDS](https://www.3m.com/SDS).

**IMPORTANT!** When using any equipment, always follow the manufacturer's instructions for safe operation.

3M is a trademark of 3M. All other trademarks are the property of their respective owners.

**3M United Kingdom PLC**  
Commercial Solutions Division  
Cain Road  
Bracknell, RG12 8HT  
UK  
[www.3m.co.uk](https://www.3m.co.uk)

**3M Ireland (Dublin)**  
The Iveagh Building  
The Park, Carrickmines  
Dublin 18  
Ireland  
[www.3m.co.uk](https://www.3m.co.uk)

© 3M 2021. All rights reserved.