

not always

*Glass is made of glass!*

### **Why change to unbreakable glassware?**

#### **You save money**

Unbreakable glass is CHEAPER in the long run

#### **Increased safety**

The glasses cannot be used as a weapon

#### **Less wear and tear on furniture**

Broken glass will not be trodden into the carpet/floor

#### **Positive mention in local media**

YOU are doing something for safety and environment

#### **Reduced weight**

Improves your staff's working environment

#### **Less cleaning**

Spend more time on your customers instead of wasting it on sweeping up broken glass

#### **Excellent insulation**

Keeps cold drinks colder and hot drinks hotter  
Freeze the glasses in 5 min. and serve the drinks ice-cold

#### **Top Quality**

Our unbreakable glassware looks and feels exactly like real glass



## About Glass4ever

Glass4ever design, produce and sell unbreakable drinking glassware all over the world.

The products are made of different kinds of specially developed plastic ensuring that the glasses never break; pieces of broken glass are not left lying around and cannot be used as a weapon.

Our products are used wherever focus is on safety, working environment and economy. All our products have been tested by independent laboratories and are of course food approved.

We offer the best quality in the market – our glasses look, weigh and feel exactly like ordinary glasses.

We are a 100% Danish owned company located in Vejle, Denmark.

## Logo on glass

Glass4ever produces a wide assortment of 100% unbreakable glassware. We also produce glasses with logo to several large companies. If you need further information about quantities, prices, etc. please feel free to contact us for a quote.

Glass4ever can “tailor-make” all glasses, giving our customers a unique glass and the design needed. There are no limits - any design can be created!







Shotglass Frosted, White  
3 cl, 19 g, 100102



Shotglass Frosted, Black  
3 cl, 19 g, 100103



Shot MIX Frosted, various colours  
3 cl, 19 g, 100104



Shotglass Clear  
3 cl, 27 g, 100201



Shot MIX clear, various colours  
3 cl, 27 g, 100202



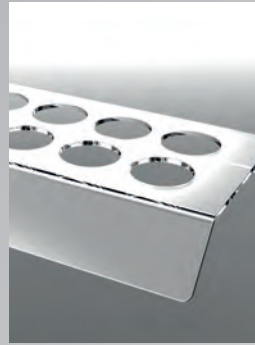
Hot Shot glass  
3 cl, 56 g, 100203



Shot Granity Clear 2/4 cl.  
4 cl, 39 g, 100204



Shot Game incl. glass, tray and  
dices, 600102



Tray with 10 shot holes,  
600104



Granity Small 22 cl.  
22 cl, 74 g, 200100



Granity Medium 32 cl.  
32 cl, 108 g, 200101



Granity Large 47 cl.  
47 cl, 151 g, 200102



Beer glass on foot, Medium 32 cl.  
32 cl, 140 g, 200103



Beer glass on foot, Large 52 cl.  
52 cl, 232 g, 200104



High Ball 33 cl.  
33 cl, 98 g, 200105



Granity ROCK Medium 24 cl.  
24 cl, 123 g, 200108



Granity ROCK Large 37 cl.  
37 cl, 132 g, 200109



Nonic 0,5 L.  
57 cl, 147 g, 200202



Tulip Small 28,5 cl.  
28,5 cl, 113 g, 999906



Tulip Medium 42,5 cl.  
42,5 cl, 144 g, 999907



Tulip Large 57 cl.  
57 cl, 187 g, 999908



Beer Mug 0,5 L.  
57 cl, 208 g, 200301



Beer Mug 1 L.  
110 cl, 325 g, 200302



Weisbeer 0,3 L.  
35 cl, 164 g, 200401



Weisbeer 0,5 L.  
57 cl, 247 g, 200402



Cocktailglass Medium 20 cl.  
20 cl, 154 g, 300100



Cocktailglass Large 40 cl.  
40 cl, 166 g, 300101



Champagne  
18 cl, 137 g, 300102



Martini  
20 cl, 124 g, 300103



Wine 40 cl.  
40 cl, 105 g, 300106



Margarita  
34 cl, 127 g, 300108



Hurricane  
40 cl, 182 g, 300109



Coffee  
25 cl, 114 g, 400100



Jug with cold 1,5 L.  
1,5 L, 139 g, 500100



Decanter 1 L.  
1 L, 117 g, 500101



Pitcher 1 L.  
1 L, 108 g, 500103



Whiskey  
15 cl, 71 g, 400101



Universal Medium  
30 cl, 106 g, 200118



Universal Large  
46 cl, 165 g, 200116

**SEE ALL**  
products,  
dimensions and  
download pictures on  
[www.glass4ever.com](http://www.glass4ever.com)







Protobrite - Glass Wash Detergent  
2 x 5 L, 10 kg, 700102



Renovate Powder  
2,5 kg, 2,5 kg, 700103



Krystal Klear - Glass Wash Rinse Aid  
2 x 5 L, 10 kg, 700112



Shotglass High Ball 6 cl.  
6 cl, 31 g, NSG 100213



Granity Medium 33 cl.  
33 cl, 117 g, NSG 200111



Champagne Epernay  
24 cl, 135 g, NSG 300112



Wine Taste Glass  
20,5 cl, 62 g, NSG 300196



Pitcher, white 1,5 L.  
1,5 L, 159 g, NSG 500102



Jasper Rock  
30 cl, 125 g, NSG PS - 10



Jasper High Ball  
46 cl, 164 g, NSG PS - 11



Granity Schimiddy 39 cl.  
39 cl, 162 g, NSG PS - 5



Wine 25 cl.  
29 cl, 82 g, NSG PS - 6



Champagne Flute  
22 cl, 78 g, NSG PS - 7



Shotglass clear 3 cl.  
3 cl, 52 g, NSG PS - 8



Jasper High Ball  
33 cl, 115 g, NSG PS-24



Double Jasper  
42 cl, 160 g, NSG PS-29



Shotglass Clear, 2 cl.  
2 cl, 26 g, NSG 100205



Shotglass Clear, 2/4 cl.  
4 cl, 28 g, NSG 100206



Köln Stange 24 cl.  
24 cl, 77 g, NSG 200115

Bestillingsvarer  
Non Stock Goods



**4 real**  
LOOKS LIKE AN  
ORDINARY GLASS



**Unbreakable**  
NO GLASS  
FRAGMENTS



**20 x**  
LONGER  
LIFESPAN



**Safe**  
CANNOT BE USED  
AS A WEAPON



## Cleaning of Glass4ever products

The products can be cleaned in exactly the same way as ordinary drinking glasses. They can be hand-washed, washed in an ordinary dishwasher or in an industrial dishwasher.

You can also boil most of the products, as they withstand temperatures of up to 120°C depending on the material. See material sheet to make sure.

Note: Never use abrasives, steel wool, razor blades or other sharp utensils for cleaning. There are no special demands as to the washing-up liquid (but see "best result" below), so just use your normal brand. When hand-washing the products, use a soft sponge, washing-up brush or a microfiber cloth.

To remove soap stains, rinse in clean water and dry remaining drops of water with a damp soft sponge or cloth. Do not use benzine, alcohol, ester or organic solvents for cleaning.

The following may discolour the unbreakable glasses and make them cloudy in the long run:

- Washing at more than 70 degrees for a longer period
- Lack of osmosis system
- Overdose of rinse aid
- Use of soap with metal protection
- Use of incorrect wash tray for glass (do not use the tray for cutlery or plates)
- Milk products / drinks can leave a lime residue if the glass is not washed with hot soapy water shortly after use
- Use of anise-based drinks (such as Pernod, Ricard, Raki or Ouzo)

## Best result

If you want the best treatment for your Glass4ever products, we recommend that you use our Proton dishwashing products. Proton specializes in the supply of high technology, cost effective and innovative cleaning and disinfection dishwashing products.

*For more information, see our website.*

**glass<sup>4</sup>ever**  
- simply unbreakable -

Friis Hansens Vej 5 | 7100 Vejle | Tel.: +45 25 42 16 39  
Fax: +45 70 14 10 39 | mail@glass4ever.com | www.glass4ever.com